

MvPCbase Help

Copyright (C) 2001-16 MVsoft Co. All Rights Reserved.

Table of Contents

Foreword	0
Part I Welcome!	4
Part II What's New in MvPCbase, and Versions History	4
Part III Introduction	8
1 What's in MvPCbase	8
2 Installation.....	9
3 Update the previous versions.....	10
4 Database.....	11
5 How to populate a database.....	11
6 Command line parameters.....	12
7 MvPCbase (Client-Server).....	12
8 Evaluation and full versions differences.....	13
Part IV Operating	13
1 Import MvPCinfo reports.....	13
2 Active scope.....	15
3 All Components and other "All..." windows.....	16
4 Operations in Locations Window.....	17
Add a location	17
Add a computer	17
Remove computer from one location to another	18
Change location or computer names	18
Delete location or computer	18
Run a command line	18
5 Operations with Computer Details.....	18
Station components	19
Add station component	19
Delete station component	20
Remove a component to other computer	20
Enter additional information	21
Custom data fields	21
Show empty items	22
6 Associated Licenses.....	22
7 Event log.....	22
8 Journals window.....	23
9 All service.....	23
10 Automatic data renew.....	23

11 How to.....	24
Part V Reporting	24
1 Statistics charts.....	24
2 Export data from database.....	25
Part VI Automatic easy-to-use network inventory	27
1 Logon scripts.....	28
Part VII How to order MvPCbase	29
1 How to order.....	29
2 Licenses and prices.....	29
3 Update policy.....	30
Index	31

1 Welcome!

[MvPCbase](#) enables you to create and support enterprise computer database. The data includes information on computers componentry, peripheral devices and locally installed software. [MvPCbase](#) allows you to:

- * create and support locations (subdivisions) structure;
- * import data from files created with [MvPCinfo](#) utility;
- * remove computers from one location to another;
- * remove components and peripherals between the computers;
- * renew data automatically while running with -r command line parameter;
- * navigate trees of installed components, network items, peripherals, custom fields values and software;
- * view components, network items, peripherals, custom fields values and software statistics charts;
- * print a set of documentation;
- * provides a complete solution for [automatic easy-to-use network inventory](#).

Key features of [MvPCbase \(Client-Server\)](#) edition are:

- * unlimited number of users can work with database concurrently;
- * [MvPCbase \(Server\)](#) creates backup copies, checks integrity and repair database automatically;
- * database can be achieved from everywhere ([MvPCbase \(Client\)](#) connects to [MvPCbase \(Server\)](#) via TCP/IP);
- * [MvPCbase \(Server\)](#) application can run on any Win 9x/Me/NT/2K/XP/2003/Vista/Win7/Win8/Win8.1/Win10 machine;
- * it doesn't require any other software or engine to be installed.

2 What's New in MvPCbase, and Versions History

Version 3.6 (Jun, 2016)

- * MvPCbase has been improved for a work with newest MvPCinfo v.3.6
-

Version 3.5 (Feb, 2016)

- * MvPCbase has been improved for a work with newest MvPCinfo v.3.5
-

Version 3.4 (Oct, 2015)

- * MvPCbase has been improved for a work with newest MvPCinfo v.3.4
-

Version 3.2 (Nov, 2014)

- * MvPCbase has been improved for a work with newest MvPCinfo v.3.2
-

Version 3.1 (Jun, 2014)

* MvPCbase has been improved for a work with newest MvPCinfo v.3.1

Version 3.0 (Mar, 2014)

* MvPCbase has been improved for a work with newest MvPCinfo v.3.0
* Now MvPCbase enables import of XLS reports

Version 2.9 (Sep, 2013)

* MvPCbase has been improved for a work with newest MvPCinfo v.2.9
* Now MvPCbase enables import of XML reports

Version 2.8 (Mar, 2013)

* MvPCbase has been improved for a work with newest MvPCinfo v.2.8

Version 2.7 (Apr, 2012)

* MvPCbase has been improved for a work with newest MvPCinfo v.2.7

Version 2.6 (Oct, 2011)

* MvPCbase has been improved for a work with newest MvPCinfo v.2.6

Version 2.4 (Mar, 2010)

* MvPCbase has been improved for a work with newest MvPCinfo v.2.4

Version 2.3 (Dec, 2009)

* MvPCbase has been improved for a work with newest MvPCinfo v.2.3

Version 2.2 (Jan, 2008)

* MvPCbase has been improved for a work with newest MvPCinfo v.2.2

Version 2.1 (Jul, 2006)

* MvPCbase has been improved for a work with newest MvPCinfo v.2.1
* Now MvPCbase(Server) can be started as NT service

Version 2.0 (Dec, 2005)

* MvPCbase has been improved for a work with newest MvPCinfo v.2.0
* Now MvPCbase supports Multilevel Locations tree
* Export Dialog has been changed: now you can select a few locations for data to be exported
* Now MvPCbase highlights duplicated OS ID keys, Asset or Service Tags, MAC or IP addresses in

"All... " windows

- * Without version item has been added to "All.." windows to show PCs where selected components aren't installed
- * Now Statistics Chart allows you to select a few locations to display aggregate statistics

Version 1.9 (May, 2005)

- * MvPCbase has been improved for a work with newest MvPCinfo v.1.9
- * MvPCbase enables Smart identification approach to PC recognition
- * Now MvPCbase creates MS Word documents much faster

Version 1.8.5 (Apr, 2005)

- * [MvPCbase \(Client-Server\)](#) edition was published
- * MvPCbase exports data to XML files
- * MvPCbase works faster

Version 1.8 (Aug, 2004)

- * MvPCbase has been improved for a work with newest MvPCinfo v.1.8
- * Import operation became faster
- * MvPCbase enables export to HTM files
- * Now you can choose a style of the Statistics chart: 3D, Pie, Vertical or Horizontal Bars and Points
- * Now MvPCbase exports the computer details in MvPCinfo style
- * Search feature has been improved
- * Now MvPCbase allows you to find and replace values in the Custom Fields
- * New [command line parameters](#) for Autoexport

Version 1.7 (Dec, 2003)

- * MvPCbase has been improved for a work with newest MvPCinfo v.1.7
- * MvPCbase has added new All Add/Remove page
- * Now dates can be displayed in DD/MM/YY format
- * MvPCbase enables importing the reports from a few directories at one button press
- * Now MvPCbase allows you to save export data formats
- * MvPCbase has added a new predefined Scope: Computers with out-of-date reports
- * Now name of a computer in the database can differ from computer name in MvPCinfo report file
- * New Autoexport feature: now MvPCbase can [export data automatically](#)
- * Now MvPCbase operates with multiline Custom Fields
- * MvPCbase has added View Import Log menu command

Version 1.6 (May, 2003)

- * MvPCbase has been improved for working with newest MvPCinfo v.1.6
- * New All Stations page has been added to combine computer's Organizations, Vendors, Models, Types, Roles and Tags
- * Now you can create and use a set of [Active scopes](#)
- * Now MvPCbase allows you to set [custom fields as fixed](#) to prevent values from erasing due to database refreshing
- * Now computer's Organization, Vendor, Model, Types, Role and Tags aren't cleared if they are empty in reimported report
- * Now computers in the Locations Window may be represented with [compound names](#)
- * Report date is displayed now on the Station page
- * Now [out-of-date reports](#) may be shown in Locations Window with different color
- * New Find Out-Of-Date Reports feature has been added
- * Now you can specify [IP-address ranges](#) to associate computers with Locations for operation of import
- * Now it's available to retrieve [additional number of licenses](#) basing on software captions, versions and file names

Version 1.50 (Nov, 2002)

- * MvPCbase has been improved for working with newest MvPCinfo v.1.50
- * New [Active scope](#) feature
- * New [Journals](#) window to see specific events and setup service tasks
- * New [All Service](#) window
- * Now more than one computer can be deleted, erased or moved between locations at once
- * New import option: [erasing or moving](#) just imported reports
- * Now [visibility and position of computer details pages](#) can be configured

Version 1.40 (Apr, 2002)

- * MvPCbase has been improved for working with newest MvPCinfo v.1.40
- * DATABASE menu section was modified to make operating with database file easily understood
- * Realized new information block with computer's Model, Manufacturer, Service and Asset Tags fields
- * Import operation became materially faster
- * Multiselect feature was realized in All Component, All Network, All Peripherals, All Software and All Custom windows
- * All Network window now includes also Shares and Mappings items
- * Print feature allows now printing thru MS Word

Version 1.11

- * Computers in Location Window could be represented with any field from Network page
- * New Network and Custom navigation trees
- * Now the data on Custom and Network pages could be edited
- * New export to file feature in Event Log
- * Improved export of the computers data

- * «Clear up to date» command allows to erase events and statistics up to desired date
- * Now you can double click computer/location/date line to find computer in the Locations Window
- * Picture view, launching Internet browser and Mail client from Custom data table context menu
- * Statistics window was improved and is sizeable now
- * Period of free upgrade was widened up to 2 years

Version 1.10

- * Computers in Locations Window could be represented with network description or any custom field
- * Added new page Network to reflect data on station Network description, User, Domain, Shares and Mapping
- * Added Environment variables table on Software page
- * New settings dialog to control import operation
- * New speed button to make data import as easy as one button press
- * Added execution of predefined command line using keywords #CompName and #IPAddr.
- * Statistics chart now available for any date and for every location separately
- * Added computer search by name and by custom field value
- * Added Windows-like help file

Version 1.05

- * Import process became faster
- * New feature of database compressing

Version 1.04

- * Statistics chart for Components, Peripherals and Software
- * New -R command line parameter to renew the computer's data

3 Introduction

3.1 What's in MvPCbase

[MvPCbase](#) enables you to create and support enterprise computers database. The data includes information on computers componentry, peripheral devices and locally installed software. [MvPCbase](#) allows you to:

- * create and support locations (subdivisions) structure;
- * import data from files created with [MvPCinfo](#) utility;
- * remove computers from one location to another;

- * remove components and peripherals between the computers;
- * renew data automatically while running with -r command line parameter;
- * navigate trees of installed components, network items, peripherals, custom fields values and software;
- * view components, network items, peripherals, custom fields values and software statistics charts;
- * print a set of documentation;
- * provides a complete solution for [automatic easy-to-use network inventory](#).

Key features of [MvPCbase \(Client-Server\)](#) edition are:

- * unlimited number of users can work with database concurrently;
- * [MvPCbase \(Server\)](#) creates backup copies, checks integrity and repair database automatically;
- * database can be achieved from everywhere ([MvPCbase \(Client\)](#) connects to [MvPCbase \(Server\)](#) via TCP/IP);
- * [MvPCbase \(Server\)](#) application can run on any Win 9x/Me/NT/2K/XP/2003/Vista/Win7/Win8 machine;
- * it doesn't require any other software or engine to be installed.

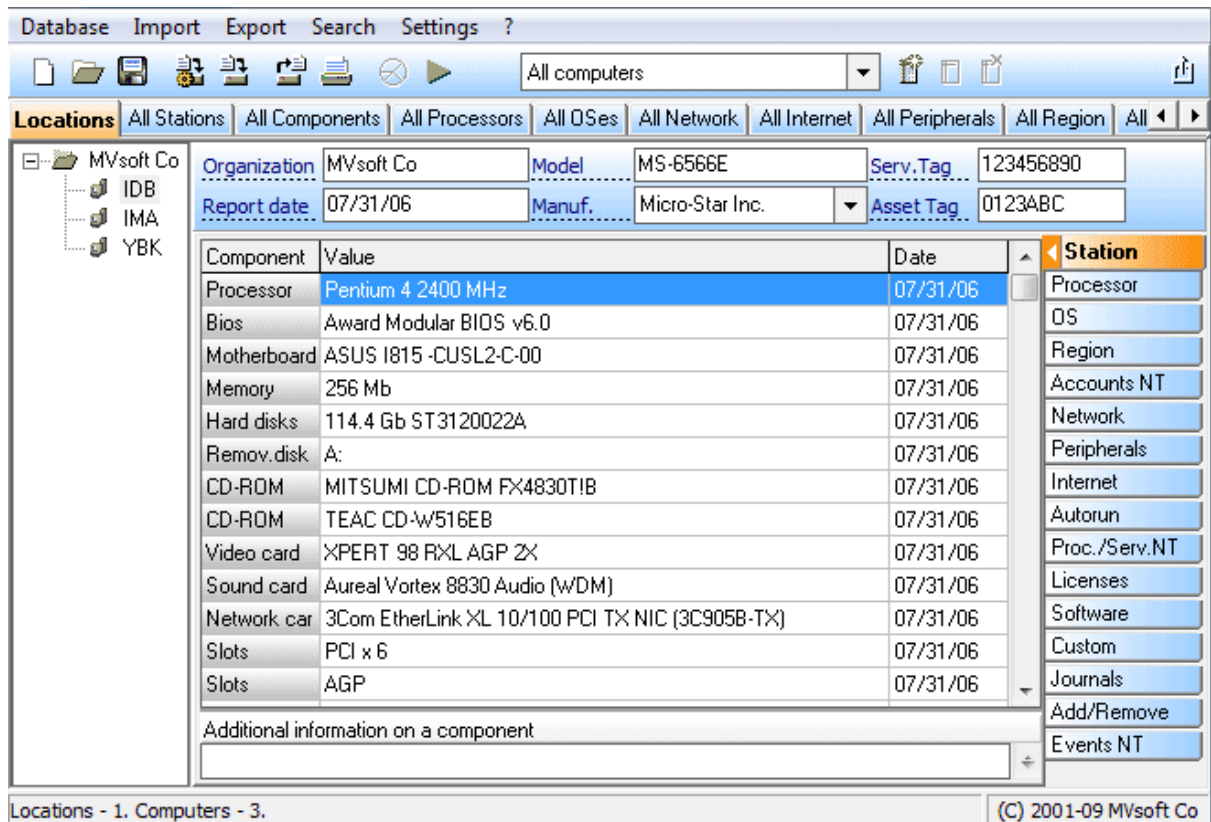
3.2 Installation

The [MvPCbase](#) installation process is very typical with no surprises. Default installation is to your Program Files directory in a subdirectory called [MvPCbase](#).

All the files that [MvPCbase](#) installs are within its own directory.

To uninstall the program choose the [MvPCbase](#) item from the [Install/Uninstall](#) tab in the [Add/Remove](#) programs control panel utility.

After [MvPCbase](#) starts you'll see a [Locations Window](#) that is divided on 2 parts.



Left part shows enterprise structure as a tree of locations (subdivisions) and their computers, right one contains information about components, peripherals and software of selected computer. Both parts have context menus to perform the operations.

3.3 Update the previous versions

MvPCbase includes mechanism for automatic conversion of the old databases to newest database structure. Please follow these steps to update the software:

1. Please exit prior copy of MvPCbase before running the new version installer.
2. Install new version into ANOTHER directory than a previous one.
3. Start the new MvPCbase.
4. Click Main Menu -> Database -> Open... command to open a database file used by the previous version.

(MvPCbase will detect old database structure and ask your permission to perform automatic conversion)

5. Click Main Menu -> Database -> Save As... command to save just converted database in a desired folder.

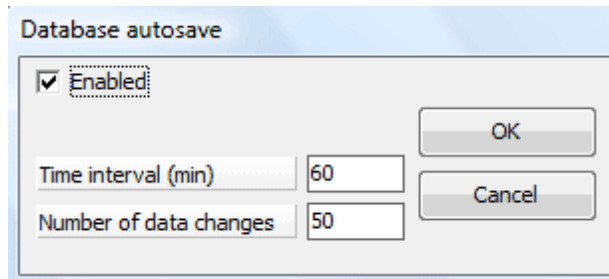
3.4 Database

[MvPCbase](#) was developed with [MVbase DBMS ver.9.0](#) - our own object-oriented database. All the data are stored in only file with MVB extension. Because naturally the database is object-oriented one it is NOT compatible with ODBC or SQL engines but is compatible with OQL.

[MvPCbase](#) main window caption shows path to a database file that is currently in-use.

Important! Please create the backup copies of a database file periodically. This will allow you to restore damaged database by mean of a simple copying.

The changes that you perform during work session may be saved in the database or not. When you close [MvPCbase](#) it asks you if you want to save the changes. You can also specify [MvPCbase](#) to keep the database automatically basing on time interval or on amount of changes. Auto-saving parameters can be specified by [Main Menu -> Database -> Autosave...](#) command:



[Main Menu -> Database -> Merge](#) command allows you to merge database files.

As soon as the number of changes becomes serious - compactness of data in the database appreciably decreases. [Main Menu -> Database -> Compress...](#) command allows you to pack data and to reduce database file size.

[Main Menu -> Database -> Clear up to date...](#) command cleans database history up to specified date. This completely removes those components form database (including [Event logs](#) and [Statistics charts](#)) that were deleted before specified date.

Any time you want to clear up whole database (for example by the end of your practice) you can click [Main Menu -> Database -> Complete Cleanup...](#) command.

3.5 How to populate a database

[MvPCbase](#) itself does not collect information about company machine staff - it was basically developed to import [MvPCinfo](#) reports files. Anyways, there are two ways to populate the database:

- you can enter all data manually: please see the topics [Add a location](#), [Add a computer](#), [Add a component](#));

- you can import [MvPCinfo](#) report files: please see [Import MvPCinfo reports](#) topic. (You can find report examples in [MvPCinfo Reports](#) folder in [MvPCbase](#) installation directory)

3.6 Command line parameters

Important! You can not run MvPCbase with command line parameters if MvPCbase is already opened. Please close the program first and then run it with the parameters or use any scheduling software to run batch file at appropriate moment.

-rDirectory to import all reports form Directory (e.g. `-r"\\server\inventory$\reports"`)

This parameter forces program to import all correct reports from the Directory and its subdirectories.

-etExportType to export information in required data format (e.g. `-et"MyExportFormat"`)

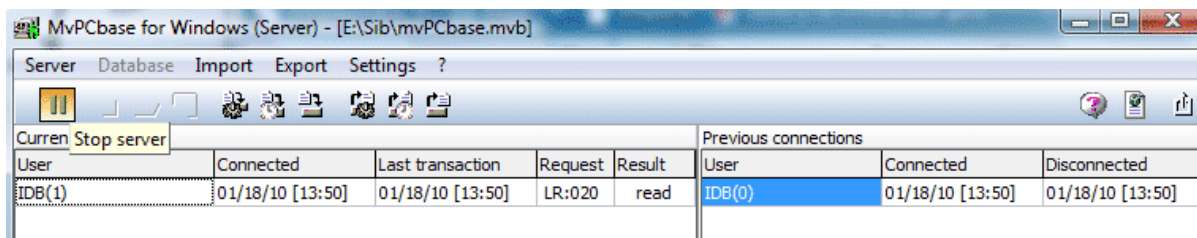
-efExportFile to export information into specified file (e.g. `-ef"\\server\shared files\reports\report.htm"`)

Please see also [Export Data from database](#).

3.7 MvPCbase (Client-Server)

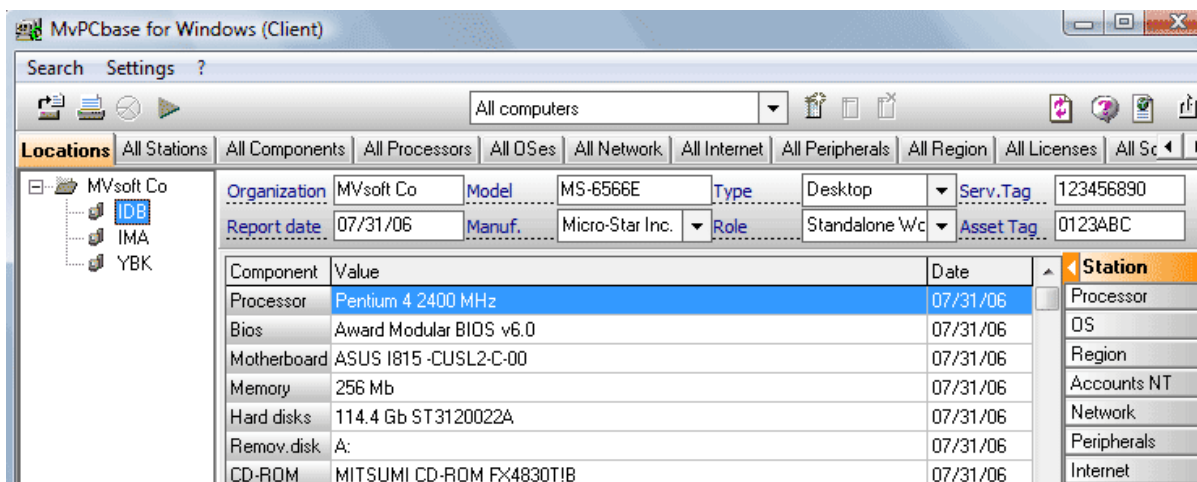
MvPCbase(Client-Server) package includes 2 main applications: **MvPCbase(Server)** (MvPCBsrv.exe) and **MvPCbase(Client)** (MvPCBcln.exe). You can download demo version from www.mvpcinfo.com.

MvPCbase(Server) is the program that provides multi-user access and works directly with database.



Current connections					Previous connections		
User	Connected	Last transaction	Request	Result	User	Connected	Disconnected
IDB(1)	01/18/10 [13:50]	01/18/10 [13:50]	LR:020	read	IDB(0)	01/18/10 [13:50]	01/18/10 [13:50]

MvPCbase(Client) is the program that communicates with **MvPCbase(Server)** application via TCP/IP protocol.



Component	Value	Date	Station
Processor	Pentium 4 2400 MHz	07/31/06	Processor
Bios	Award Modular BIOS v6.0	07/31/06	OS
Motherboard	ASUS I815 -CUSL2-C-00	07/31/06	Region
Memory	256 Mb	07/31/06	Accounts NT
Hard disks	114.4 Gb ST3120022A	07/31/06	Network
Remov. disk	A:	07/31/06	Peripherals
CD-ROM	MITSUMI CD-ROM FX4830T1B	07/31/06	Internet

There is no limitation on the number of [MvPCbase\(Client\)](#) programs that are connected to [MvPCbase \(Server\)](#) concurrently.

3.8 Evaluation and full versions differences

The only limitation of MvPCbase evaluation copy is the number of supported locations and computers: the limit is 2 locations with 5 computers in each.

Evaluation period is 30 days after the first run.

4 Operating

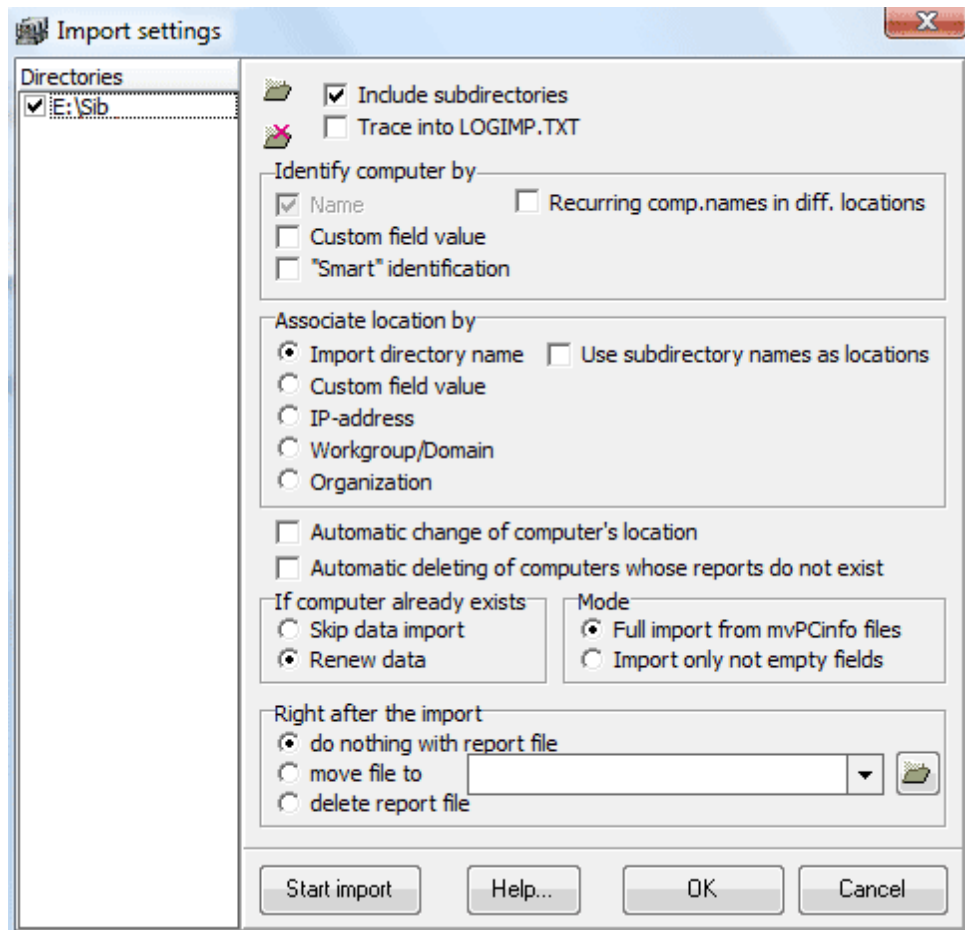
4.1 Import MvPCinfo reports



[MvPCinfo](#) utility collects information about computer's hardware and software and can be used to populate the database.

Important! **Please don't try to import MvPCinfo's reports created with use of templates - only standard non-columned TXT, CSV, XML or XLS reports can be used for import.**

[MvPCbase](#) allows you to import [MvPCinfo](#) reports manually or automatically on a periodic basis. To import reports manually please select a desired location in Locations Window, click right mouse button and select [Import computer report...](#) command. You will see Open File Dialog with multi-select option available. Select the reports and press **OK** button. [MvPCbase](#) will try to import reports and in the case of success you will see a list of computers appeared under selected location.

[MvPCbase](#) can be adjusted to perform import by one button pressing. Please click [Main Menu -> Import->Import settings...](#) command to specify required import operation parameters.

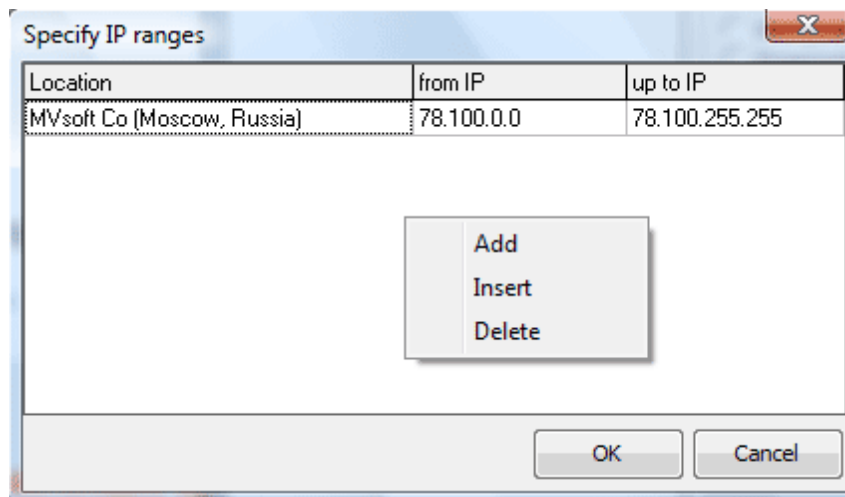


First you need to specify is a list of directories where [MvPCinfo](#) reports are placed. Please use   buttons to add and delete directories.

Next setting specifies computer identification process. While processing a report file [MvPCbase](#) parses computers data, searches if the computer already exists in the database and finally adds or refreshes existing computer information. By a default, [MvPCbase](#) uses Computer Name field to recognize a computer. If you'd like [MvPCbase](#) to distinguish and contain different machines with the same name - please use additional options provided by program.

[Smart identification](#) approach uses a combination of hardware data (serials, tags and so on) to distinguish machines with the same names.

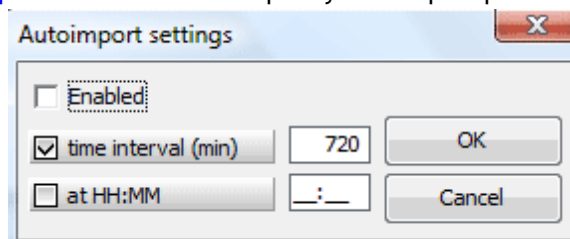
Next you need to specify is how reports will correspond to locations in the database. Please choose one of the items in Associate location by group. For example you can specify to place computers into locations basing on their IP addresses:




Also you can specify a special action with just imported files: you can choose erasing or moving them into other directory (e.g. from shared network folder to some local one).

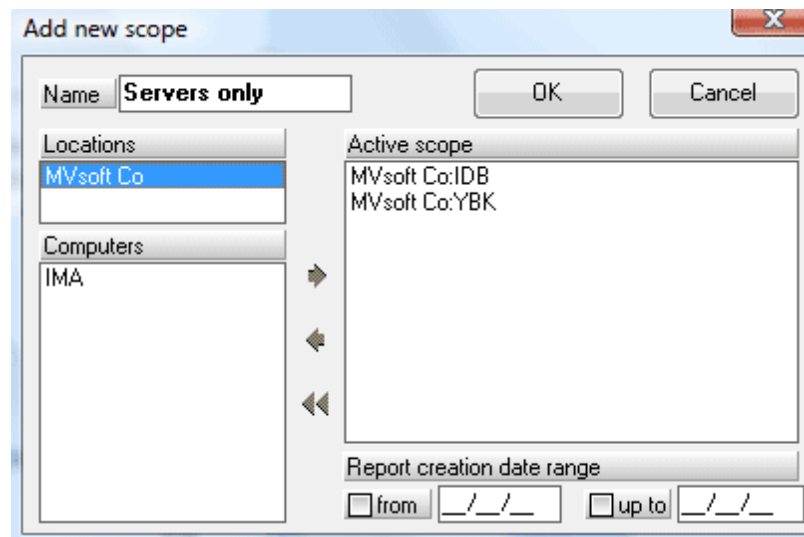
To start import operation - click [Main Menu -> Import->Start Import](#) command or click  button.

Also you can adjust [MvPCbase](#) to import data automatically in regular intervals - please click [Main Menu -> Import -> AutoImport...](#) command and specify AutoImport parameters in the dialog:



4.2 Active scope

[Active Scope](#) feature allows you to get information and reports about certain locations and computers. Predefined [All computers](#) scope forces [MvPCbase](#) to show information about all computers stored in database. You may add, edit and delete Scopes using corresponding buttons on the Tool Bar:  .



Above dialog will allow you to choose locations and computers to be associated with a specific scope.

4.3 All Components and other "All..." windows

MvPCbase allows you to navigate [All stations](#), [All Components](#), [All Processors](#),... pages. The content of these pages is automatically created while you operate with database.

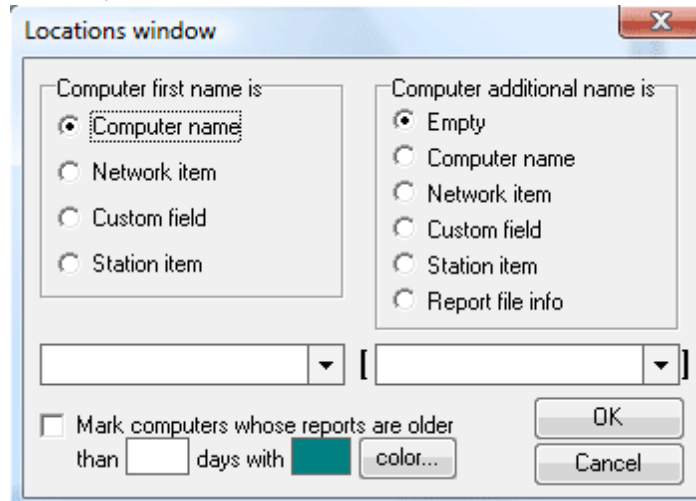
Location	All Stations	All Components	All Processors	All OSes	All N...
Fields					
Processor					
Bios					
Motherboard					
Memory					
Hard disks					
Remov. disks					
CD-ROM					
Video card					
Sound card					
Network cards					
Slots					
Values					
Pentium 4 2400 MHz					
Pentium III 533 MHz					
Pentium III 733 MHz					
Without Processor					
	Location	Computer	Date		
	MVsoft Co	IDB	07/31/06		
	MVsoft Co	YBK	07/31/06		

Left side of any window shows list of all existing items. If you choose one (or a few) items you get a list of computers (on the right side) where selected items are installed. Double-clicking any line of computers list brings you to page with selected computer data.

You can use [Main Menu](#) -> [Settings](#) -> [All windows...](#) command to configure All windows pages.

4.4 Operations in Locations Window

Locations Window represents a computers staff combined into locations. Computers in locations can be represented in different ways. Click [Main Menu -> Settings -> Locations Window...](#) command to choose appropriate window style:



This dialog allows also specify a number of days to show with different color the machines whose reports are older than specified number of days.

Below is a list of most common operations with the Locations Window:

[Add a location](#)

[Add a computer](#)

[Import MvPCinfo reports](#)

[Export data from database](#)

[Remove computer from one location to another](#)

[Change location or computer names](#)

[Delete location or computer](#)

[Run a command line](#)

4.4.1 Add a location

Click right mouse button above Locations Window. Then choose [Add](#) location item in a popup menu appeared. Type in the location name in corresponding field of the dialog. Also for more compliance with realistic enterprise history you can enter proper creation data for this location. Finish creating process with pressing [OK](#) button. As a result you will see the new location in Locations Window with the name you just typed in the dialog.

4.4.2 Add a computer

Choose a desired location in Locations Window. Press right mouse button and select [Add](#) computer popup menu item. There will appear a dialog window where you need to type in a name for a new computer. It could be network name of this PC in your company's LAN, name of its user or any other unique identifier. If you know real date of the computer installation you can enter it in corresponding

field in the dialog. Finally press **OK** button. You will see the computer name among the computers of chosen location.

Repeat above procedure to add more computers.

Note: components, peripherals, network items and software of all just added computers are empty. There are two ways to fill up these fields: to type in information manually or to import data from files generated by [MvPCinfo](#) utility or another program that produces reports in MvPCinfo-like TXT or CSV format.

4.4.3 Remove computer from one location to another

To remove a computer between the locations choose it please in Locations Window and right-click mouse and select [Change computer location...](#) command. In the dialog type in correct remove date and choose a new desired location. Then press **OK** and see the results in Locations Window.

4.4.4 Change location or computer names

To edit location, computer name or installation date - select computer in Locations Window and click right mouse button. Then select [Edit Location name...](#) or [Edit computer name...](#) command, change the data in the dialog and press **OK**.

4.4.5 Delete location or computer

To delete a computer - select it in Locations Window, press right mouse button and click [Delete computer...](#) command. You will be prompted to type in a correct deletion date. Enter the appropriate date and press **OK**.


To delete a location - delete all the computers that belong to it and then click [Delete location...](#) contextual menu command.

4.4.6 Run a command line

This feature allows you to execute predefined command line for every computer in Locations Window. For example you can run some remote controlling program to force MvPCinfo utility running on the remote PC. Or you can start MS Word (or Excel) with MvPCinfo report file placed as command line parameter to be opened.

Command line may be defined in [Main Menu -> Settings -> Command line...](#) dialog. To adjust the command line to computer that is currently selected in Locations Window you can use 2 predefined keywords: [#CompName](#) and [#IPAddr](#). Below is an example:

```
start c:\msoffice\winword.exe c:\PCinfo\#CompName.txt
```

MvPCbase will replace keywords with realistic values and then try to execute the command line. To run a command line click  button.

4.5 Operations with Computer Details

Right side of [MvPCbase](#) window contains detailed information about computer that is selected in Locations Window. You can see up to 21 pages on ther: Station, Processor, Oper.System and so on.

You can change order of pages, hide or show certain page via [Main Menu -> Settings -> Computer details...](#) dialog.

Below is a list of most common operations with the computer details:

- [Station components](#)
- [Add station component](#)
- [Delete station component](#)
- [Remove a component to other computer](#)
- [Enter additional information](#)
- [Custom data fields](#)

4.5.1 Station components

Please select a computer in the Locations Window and click Station Tab on the right side.

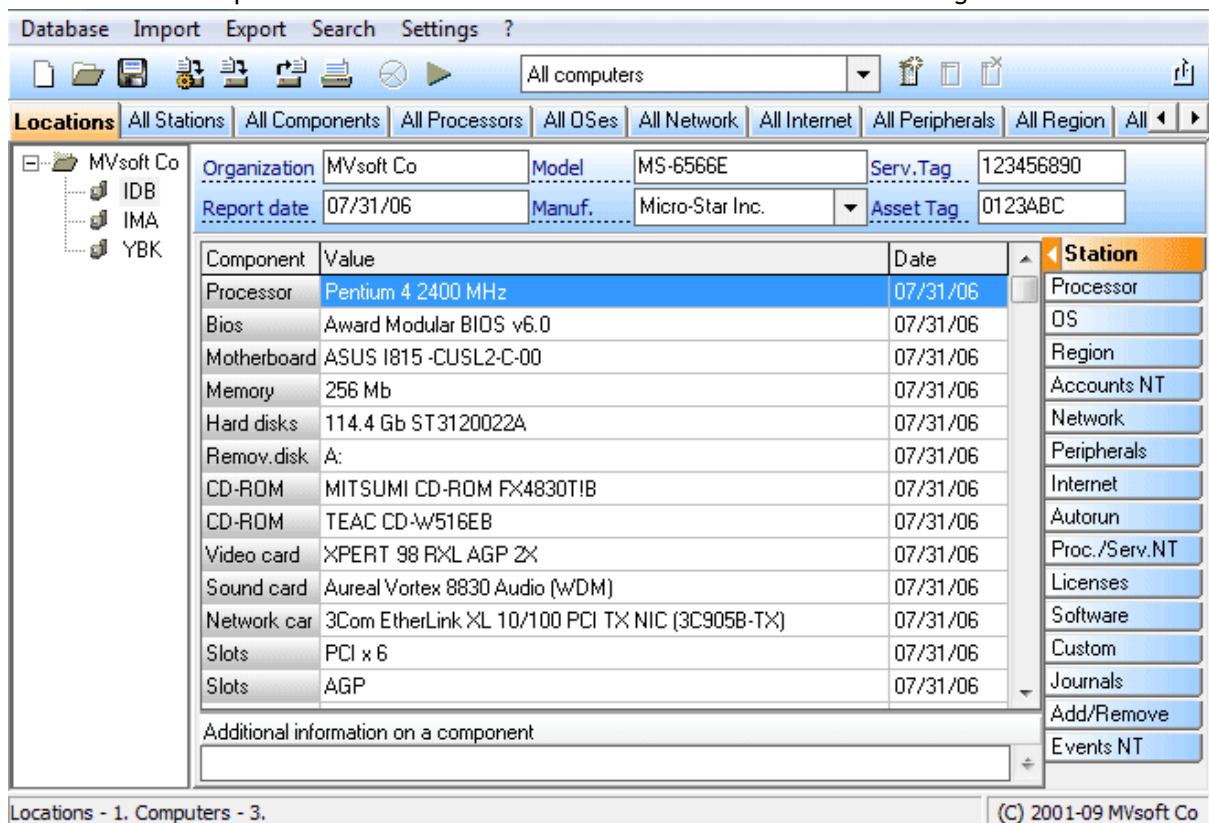
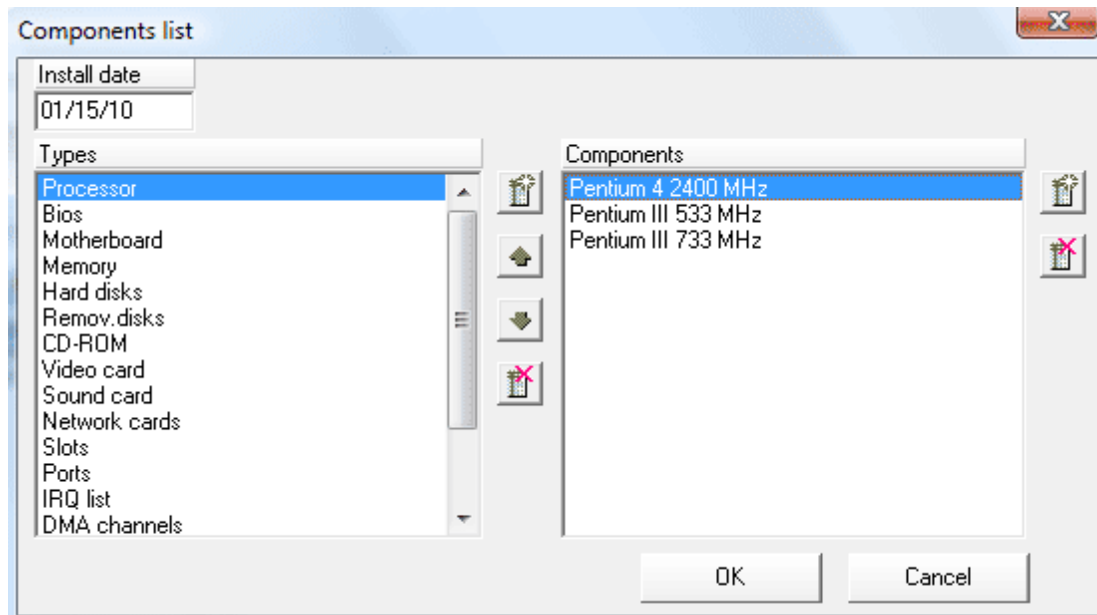


Table you will see represents data about computer station components. It is divided in 3 columns: [Component](#), [Value](#) and installation [Date](#). All operations with the data in that table are performed with use of a context menu available by right mouse button clicking.

4.5.2 Add station component

To add a new component into selected computer - right-click mouse above [Components](#) table on the [Station](#) page and choose [Add](#) menu command. You will see Components list dialog applied for operating with components.



There are 2 lists in the dialog: list of the component types and list of the component names. After first start you will see types list previously filled with most typical set of component types. The order of the types in list corresponds to types order on [Components](#) page. You can change this order with up and down arrow buttons on the right of types list.

List of the component names contains data on all components of selected type stored in the database at the moment. If component name you want to add is already listed in it - choose that name and press OK button. If not - use Add button a new name and then press OK. When you import reports to database both lists are filled up automatically.

The [Install date](#) field in the dialog allows you to enter date of component installation into selected computer.

4.5.3 Delete station component

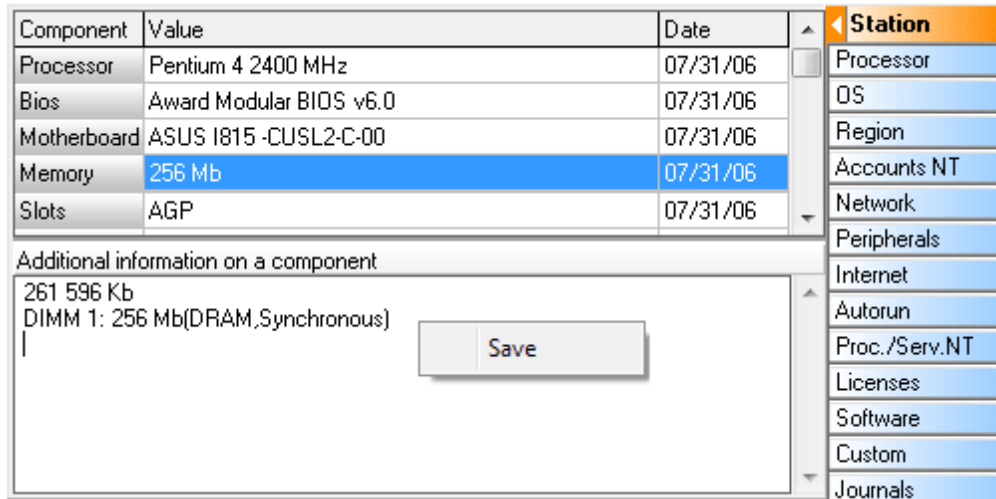
To delete any station component select it on the [Station](#) page and click contextual menu [Delete](#) command. Then type in realistic date into date field in the dialog and press [OK](#). This way you will fix the fact of deleting in the database and the component will not be seen in station's component list. However, the full history of this component will be stored in the log and will be available there.

4.5.4 Remove a component to other computer

Sometimes it is needed to reflect a fact that some component is to be removed form one computer to another. To do that select a required component in the Components list of source station and click [Remove](#) contextual menu command. In the dialog type in a correct removal date, then choose destination location and computer and press [OK](#). The component will be removed and corresponding record will appear in the [Event log](#).

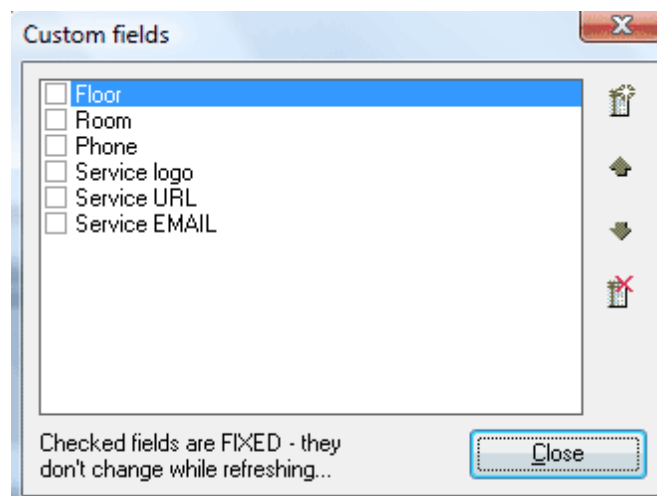
4.5.5 Enter additional information

MvPCbase allows you to save additional information for any installed component. To do that choose desired component and type in the data in the area under components list. Then right click mouse above this area and choose **Save** contextual menu command. If you will select the component next time - the saved information will be displayed in **Additional information** area.



4.5.6 Custom data fields

MvPCbase enables you to add custom data to database to make it more convenient with your real needs. If you use **MvPCinfo** utility with **[Custom]** section specified in configuration file (pcinfo.cfg) and import the data into database - all the Custom Fields appear automatically on **Custom** page. Also you can create Custom Fields list manually in Custom Fields dialog - to do that click **Main Menu -> Settings -> Custom...** command.



The dialog contains field list that can be modified with commands of contextual menu and the buttons on the right.

After Custom Fields list is built it becomes available for manual data entering - select a computer in

Locations Window and click [Custom](#) tab. You will see [Custom Fields](#) table. To type in the data you need double-click any line and press [Enter](#) after you finish editing.

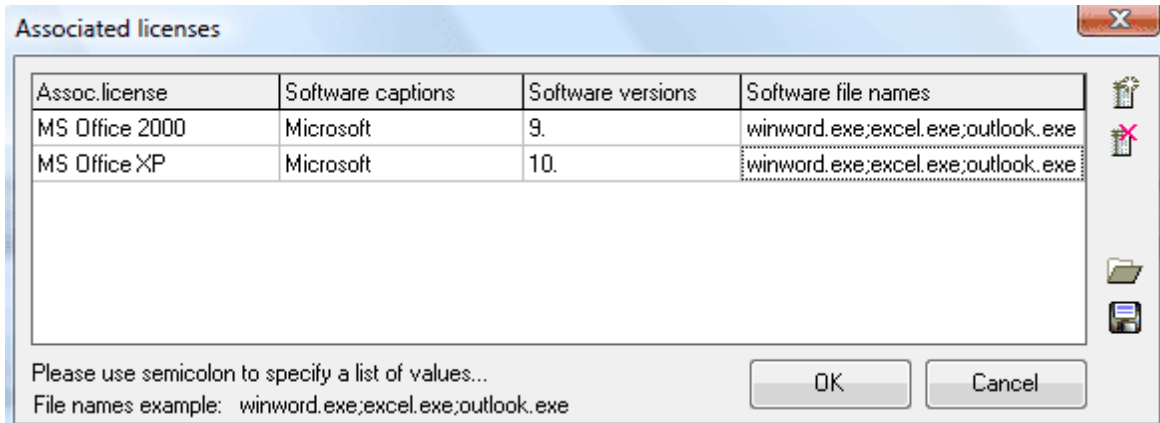
Also you can mark any Custom Field as [Fixed](#) - values of these fields will never be automatically changed while report renewing.

4.5.7 Show empty items

By default, all the component lists show only installed components. To see the list of all available components you can click [Show empty items](#) contextual menu command.

4.6 Associated Licenses

This feature allows you to retrieve additional number of licenses basing on captions, versions and file names of collected software. You can create and edit a list of license associations in Settings/ Licenses... dialog.



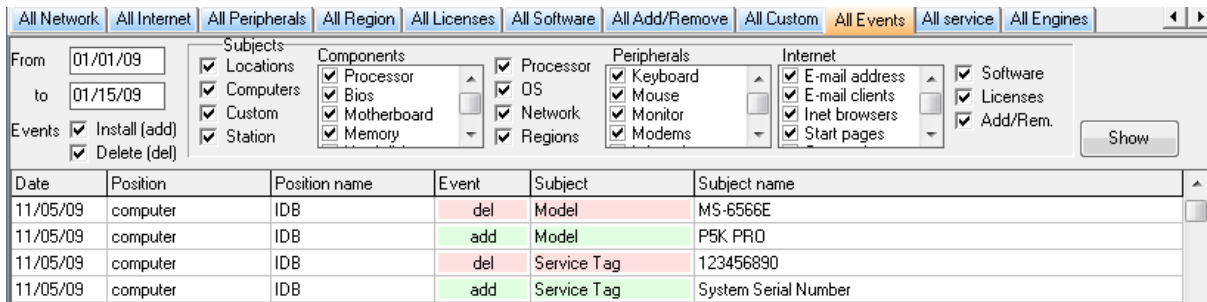
While importing report files [MvPCbase](#) compares software items with the table of specified associations. If software item satisfies the conditions of some association - corresponding Associated License is placed onto [Licenses](#) page of this computer.

If you leave software captions, versions or file names empty - it is considered that any value is suitable. Also you can specify a number of suitable values for each captions, versions and file names parameter - simply list all required values with a semicolon as a divider.

4.7 Event log

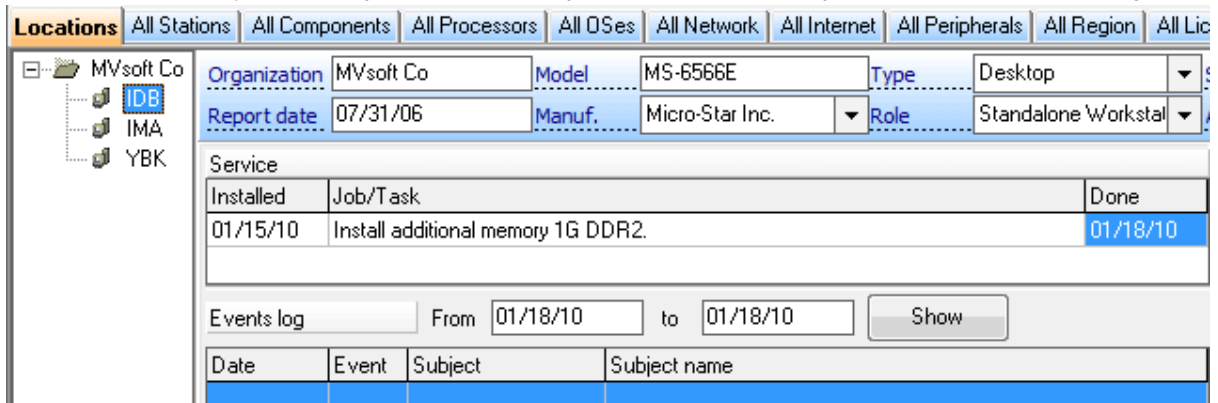
All the actions that you perform with data in database are fixed in [Event Log](#). To view it click [All events](#) tab. You can display and print the list of events occurred between specified dates. Also you can specify content that you want to see in the log using applied checked boxes.

Note: if you not clear up the database after your practice - Event Log includes your training activities.



4.8 Journals window

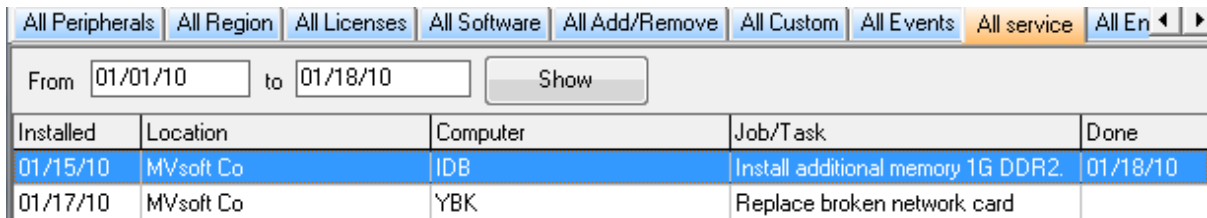
This window allows you to setup service works specific to certain computer and see its Event Log.



Please use contextual menu to add and delete service journal lines. Joined information about all service jobs for all computers in the database can be viewed in [All Service](#) window.

4.9 All service

This window shows all service works assigned for all computers in the database.



Service works for a separate computer can be specified and viewed in [Journals](#) window..

4.10 Automatic data renew

[MvPCbase](#) may be adjusted to perform automatic database renewal. If you'll run [MvPCbase](#) with [-rDirectory](#) command line parameter - all suitable files from the [Directory](#) and its subdirectories will be automatically imported and corresponding computers will be renewed in their locations in the database. If new computer appears - it is placed into location named as [Directory](#) or as it is specified in [Main Menu -> Import -> Import settings...](#) dialog.

Important! You can not use this feature when **MvPCbase** is already opened. Close the program first and then run it with -r parameter or use any scheduling software to renew data at appropriate moment.

4.11 How to...

[install MvPCbase \(Personal\)...](#)

[populate a database...](#)

[import MvPCinfo reports...](#)

[remove MvPCinfo reports from shared folder after import...](#)

[export data from database...](#)

[update my older version...](#)


[to order...](#)

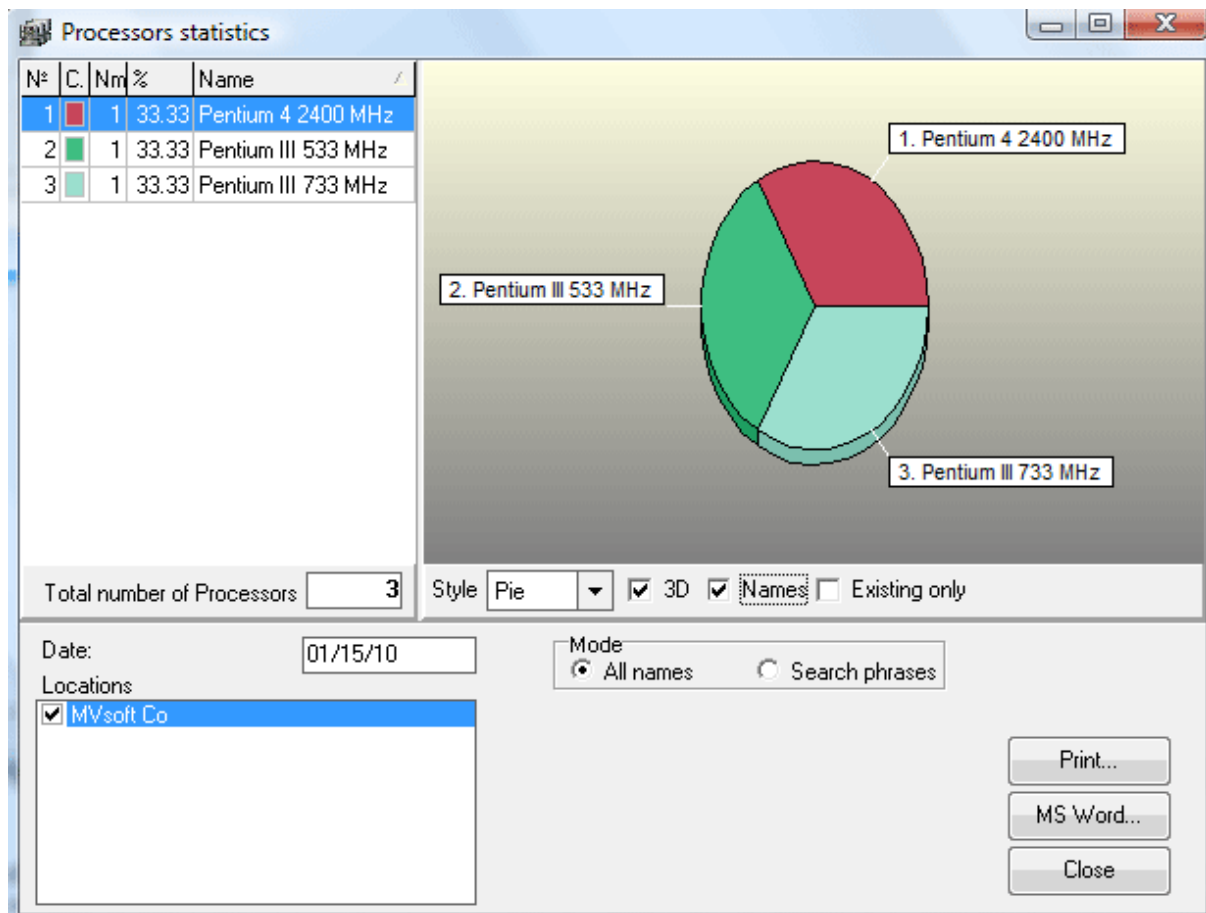
[uninstall MvPCbase \(Personal\)...](#)

5 Reporting

Enter topic text here.

5.1 Statistics charts

Every time you switch to All Components or any other "All..." page you can view the [Statistics chart](#). Select a line in Fields list and click [Statistics...](#) contextual menu command or  button.

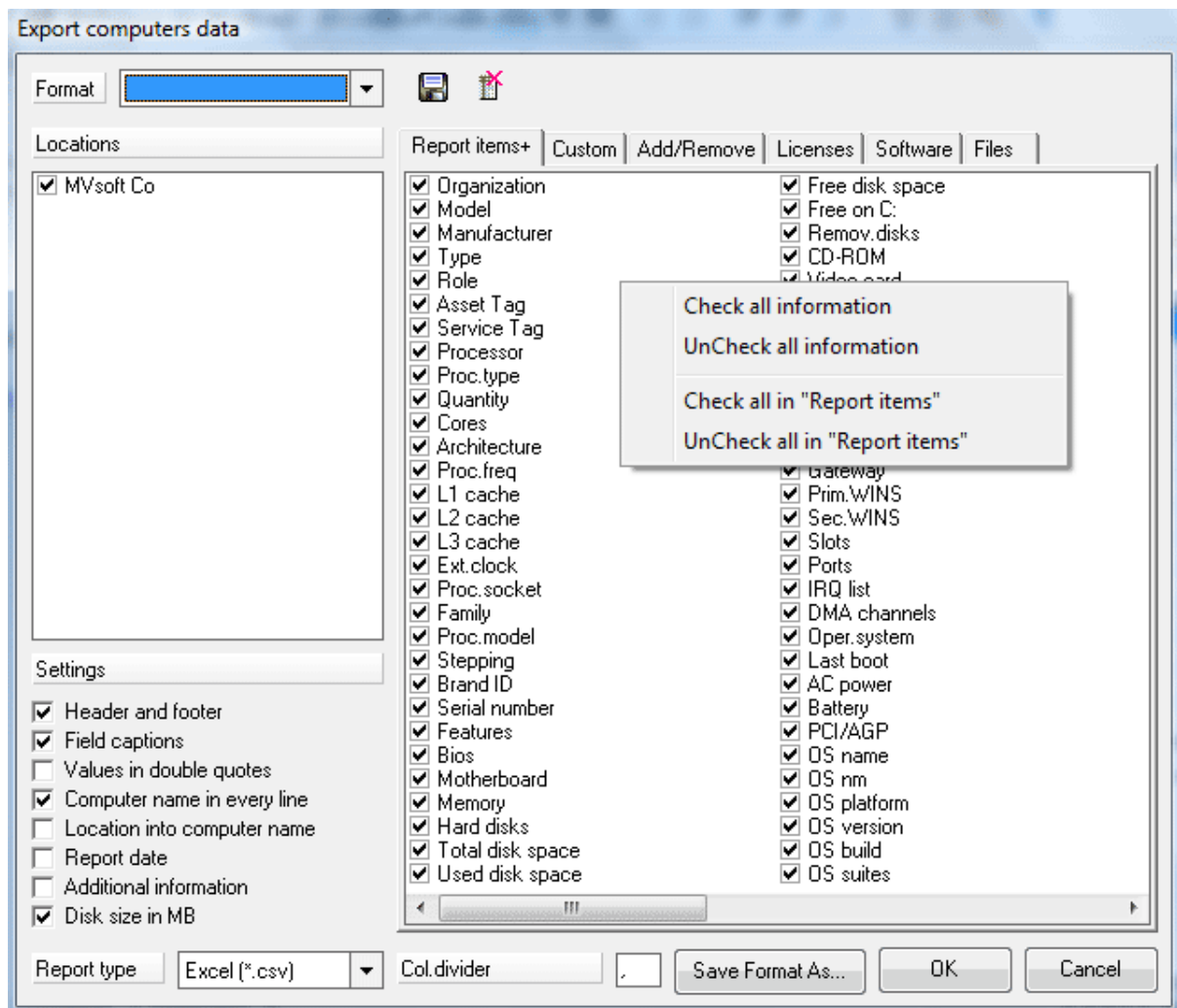


You can see statistics on any date you want; for all locations or for every each location separately.

Statistics chart represents information in 2 modes. When [All names](#) mode is chosen - chart displays statistics of all existing items. [Search phrases](#) mode allows you to view statistics on those items which names include predefined Search phrases. These phrases can be added and deleted with a contextual menu of phrases list box.

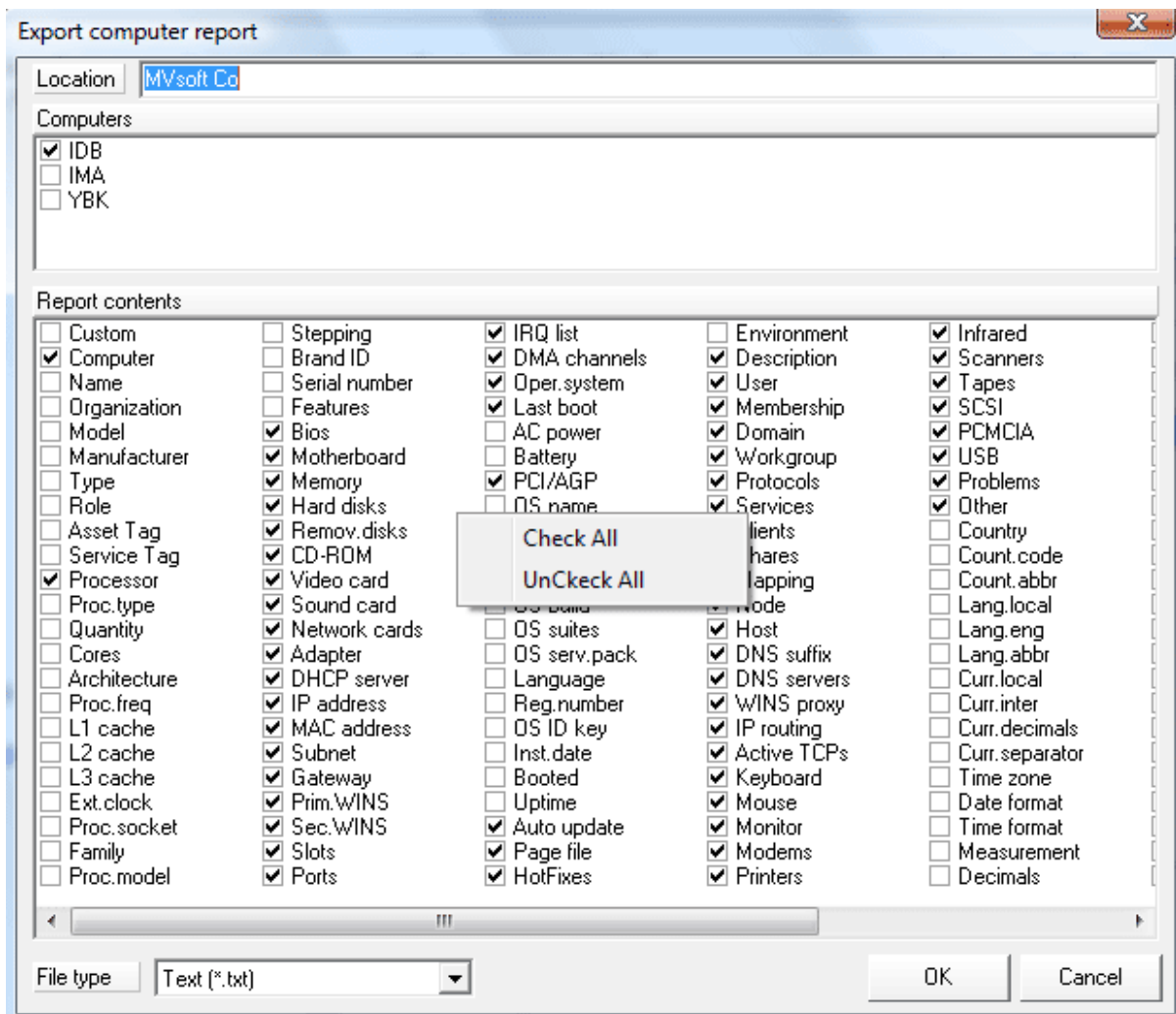
5.2 Export data from database

Any time you choose a location or certain computer in Locations Window you can to export data to TXT, CSV, HTM or XML file. Please right-click mouse above Locations Window and choose [Export computers list...](#) contextual menu command. You will see a dialog as below:



This dialog allows you to specify required data format for export as well as to save format for future quick access.

Also [Export computer report...](#) command is available for any selected location or a computer:



This dialog allows you to select computers and required format to generate [MvPCinfo](#) report files from [MvPCbase](#).

Additionally you can adjust [MvPCbase](#) to perform export automatically on a periodic basis.

6 Automatic easy-to-use network inventory

We would like to offer you [easy-to-use solution for automatic inventory](#) of a whole network based on our software. The idea is to perform hidden automatic inventory of the network workstations while they are connecting to network server.

Using [MvPCinfo](#) for data collecting

To install automatic hidden inventory of your LAN with [MvPCinfo](#) you need:

- 1) to place MvPCinfo.exe into network server shared folder:

ex. \\SERVER\inventory\PCinfo\mvPCinfo.exe

2) to create a Configuration File (pcinfo.cfg) and place it into the same folder (MvPCinfo Site and World licenses owners have opportunity to attach pcinfo.cfg directly to mvPCinfo.exe) :

ex. \\SERVER\inventory\PCinfo\pcinfo.cfg

Below is an example of simplest one line configuration file:

```
-s -e1 -onSoft -d\\SERVER\inventory\PCinfo\Reports
```

(-s parameter forces MvPCinfo to run hidden and save TXT report into directory specified with -d parameter; -e1 parameter specifies performing inventory not more often than once a day).

3) to include a launch of MvPCinfo into server's [logon script](#):

ex. \\SERVER\inventory\PCinfo\mvPCinfo.exe

That's all! Now inventory will be performed automatically and invisibly to network users.

Combining collected reports into database

MvPCbase program was developed especially to create and support company's computers database in easy-to-use manner. MvPCbase may be ran in 2 modes:

* visual mode (without command line parameters): for visual work with the data;

* hidden mode (with -r command line parameter): to import MvPCinfo reports from directory specified in that parameter.

While working in visual mode you can upload all MvPCinfo reports with one button press. Also you can use any scheduling software to run MvPCbase in hidden mode to refresh the database periodically. Additionally MvPCbase can erase or move just imported reports from shared network folder to another (local) one.

6.1 Logon scripts

In general, Logon scripts are batch files or executable files that run automatically when a user logs on to a computer running either Windows NT, Windows 9x, or MS-DOS. Logon scripts are often used to configure users' working environments by making network connections and starting applications.

The logon script can be either a batch file (.BAT or .CMD) or an .EXE file. The specified logon script is executed on the client's computer at the time of logon authentication. Examples of logon script commands include the execution of an anti-virus scanning on the client's local hard drive, calling another batch file, and attaching to network resources, as well as any other process specific to the user name that should be executed each time the client logs onto the domain.

Following is a sample batch file that can be used as a logon script:

```
net use o: \\server\c-drive
net use p: \\server\e-drive
net use lpt2: \\server\hp
net use n: \\server\d
net use m: \\server\maildata
call \\server\netlogon\landesk\netbios.bat
```

or

```
start \\server\inventory$\mvpcinfo.exe
```

Logon scripts are created using any text editor, such as Notepad, and must be saved as unformatted ASCII files.

To assign a user a logon script, designate the path name of the logon script file in the user's account on the server. Then, whenever that user logs on, the logon script is downloaded and run. You can assign a different logon script to each user or create logon scripts for multiple users.

For more information please apply to Microsoft Server NT documentation.

7 How to order MvPCbase

7.1 How to order

We use [ShareIt! Inc.](#) service to sell our products.

If you would like to order [MvPCbase](#) - please start purchase procedure using this link <http://www.shareit.com/product.html?cart=1&productid=300255220&cookies=1&showcart=1>. There you'll find order forms for [MvPCbase](#) licenses and you will be able to choose appropriate payment method (Credit Card, Check, Wire transfer and so on).

If you have ordered [MvPCbase](#) and would like to review your order information, or if you have questions about ordering, payment, or shipping procedures, please go visit the [Customer Care Center](#).

7.2 Licenses and prices

Product: [MvPCbase \(Personal\) \(#300255220\)](#)

Description: one-user database

Licensing: You may install a copy of the Software on a computer and freely move the Software from one computer to another, provided that you are the only individual using the Software and only one copy of it runs at any moment.

Cost: 99 EURO / 129 USD

Product: [MvPCbase \(Client-Server\) \(#300255221\)](#)

Description: multi-user database

Licensing: You must acquire one copy of the software for each machine on which MVPCBASE (Server) application will be installed. You are permitted to install the MVPCBASE (Client) application on as many machines as you see fit. There is no limitation on the number of Client applications which are connected concurrently to MVPCBASE (Server).

Cost: 250 EURO / 299 USD

Product: [Upgrade from Personal to Client-Server \(#300255222\)](#)

Cost: 150 EURO / 199 USD

Support: 2-years [free update](#)

You can find the latest info on licensing and pricing on <http://www.mvpcinfo.com/PCbase/licenses.htm>.

(please see also [How to order](#))

7.3 Update policy

Our company provides MvPCbase customers with 2 years of free update and support. We deliver updates ourselves by sending update materials directly to e-mail address placed in order.

If you want to get your free update faster - please send your email request to support@mvpcinfo.com.

Typical reasons of unsuccessful update delivery:

- your e-mail address has been changed: please do not forget to inform us support@mvpcinfo.com about your e-mail address change;

- your local mail server firewall blocks, damages or kills the mails with EXE files enclosed: contact please your network administrator to allow receiving the e-mails with MvPCbase words in Subject OR provide us with additional e-mail address (for example at @yahoo.com, @gmail.com, @hotmail.com or others web-based mail servers) to allow us to send the update materials to both main and additional addresses.

Index

- A -

- Active scope 15
- Add a computer 17
- Add a location 17
- Add station component 19
- All Components and other "All..." windows 16
- All service 23
- Associated Licenses 22
- Automatic data renew 23
- Automatic easy-to-use network inventory 27

- C -

- Change location or computer names 18
- Command line parameters 12

- D -

- Database 11
- Delete location or computer 18
- Delete station component 20

- E -

- Enter additional information 21
- Evaluation and full versions differences 13
- Event log 22
- Export data from database 25

- H -

- How to order 29
- How to populate a database 11
- How to... 24

- I -

- Import MvPCinfo reports 13
- Installation 9

- J -

- Journals window 23

- L -

- Licenses and prices 29
- Logon scripts 28

- M -

- MvPCbase (Client-Server) 12

- O -

- Operations with Computer Details 18
- Operations with Locations Window 17

- R -

- Remove a component to other computer 20
- Remove computer from one location to another 18
- Running a command line 18

- S -

- Show empty items 22
- Station components 19
- Statistics charts 24

- U -

- Update policy 30
- Update the previous versions 10

- W -

- What's in MvPCbase 4
- What's New in MvPCbase
and Versions History 4