



## MvPCview Help

Copyright (c) 2000-18 MVsoft Co. All Rights Reserved.

# Table of Contents

Foreword	0
<b>Part I Welcome!</b>	<b>3</b>
<b>Part II Operating instructions</b>	<b>3</b>
1 Installation.....	3
2 Specifying Root folder.....	3
3 Change the View.....	4
4 View MvPCinfo report.....	4
5 Adjust columns.....	5
6 Search of computer.....	6
7 Component Explorer.....	6
8 Statistics Chart.....	7
<b>Part III Licenses and prices</b>	<b>8</b>
<b>Part IV How to buy MvPCview</b>	<b>9</b>
<b>Part V Update policy</b>	<b>9</b>
<b>Part VI Evaluation and full versions differences</b>	<b>9</b>
<b>Index</b>	<b>11</b>

# 1 Welcome!

MvPCinfo is the hardware and software inventory utility that can be used for personal needs as well as for whole network inventory. MvPCinfo creates one or a few report files for each machine at one run.

[MvPCview](#) is a program that allows you to have a view of data collected from all the machines, explore components and get statistics. [MvPCview](#) doesn't contain any database - at every start it simply goes around all the reports and retrieves collected data.

**Important!** [MvPCview](#) works with TXT, CSV, XLS or XML reports created by MvPCinfo without using templates.

-----  
MvPCview Copyright (c) 2000-18 MVsoft Co. All Rights Reserved.  
WWW: [www.mvpcinfo.com](http://www.mvpcinfo.com)  
E-Mail: [support@mvpcinfo.com](mailto:support@mvpcinfo.com)

## 2 Operating instructions

### 2.1 Installation

The [MvPCview](#) installation process is very typical. To install program simply double-click installation file (mvpview.exe). Default installation is to your Program Files directory in a subdirectory called MvPCview.

All the files that [MvPCview](#) installs are within its own directory.

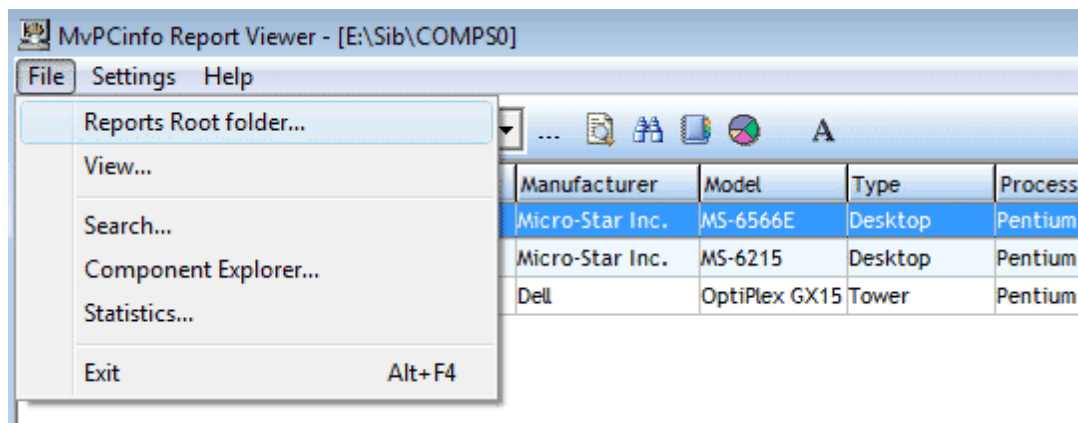
To uninstall the program choose [MvPCview](#) item from the [Install/Uninstall](#) tab in the [Add/Remove](#) programs [Control Panel](#) utility.

### 2.2 Specifying Root folder

[MvPCview](#) displays information recollected from MvPCinfo reports. So the first is required is to specify the folder where MvPCinfo reports are located.

Please click [Main Menu -> File -> Reports Root folder...](#) and select the directory.

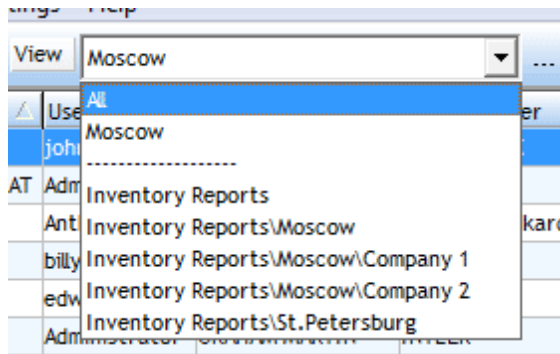
[MvPCview](#) checks specified folder and its subdirectories and displays sorted list of machines found.



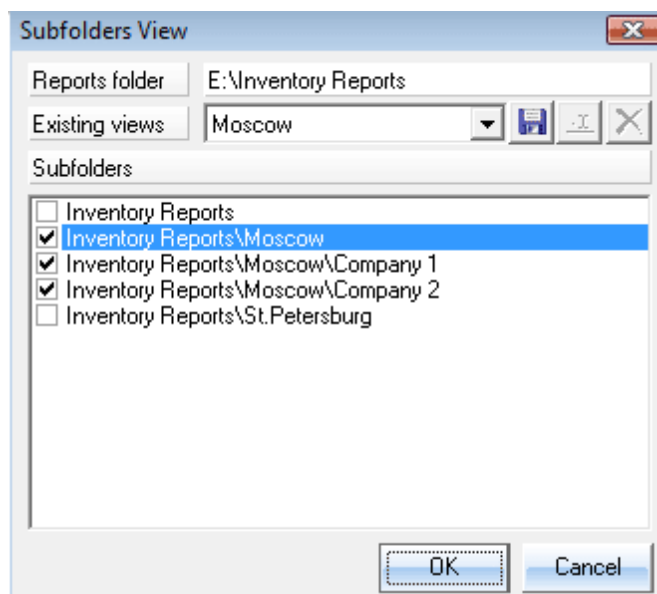
## 2.3 Change the View

By default, **MvPCview** shows All computers which reports were found in Root folder and its subfolders. **MvPCview View** feature allows you to show reports of from any subfolder or even create your own **View** that will specify required subfolder set.

To switch View to any subfolder select any in View box.



If you would like to create your own View that will combine a set of desired subfolders - please click **Main Menu** -> **File** -> **View...** command.

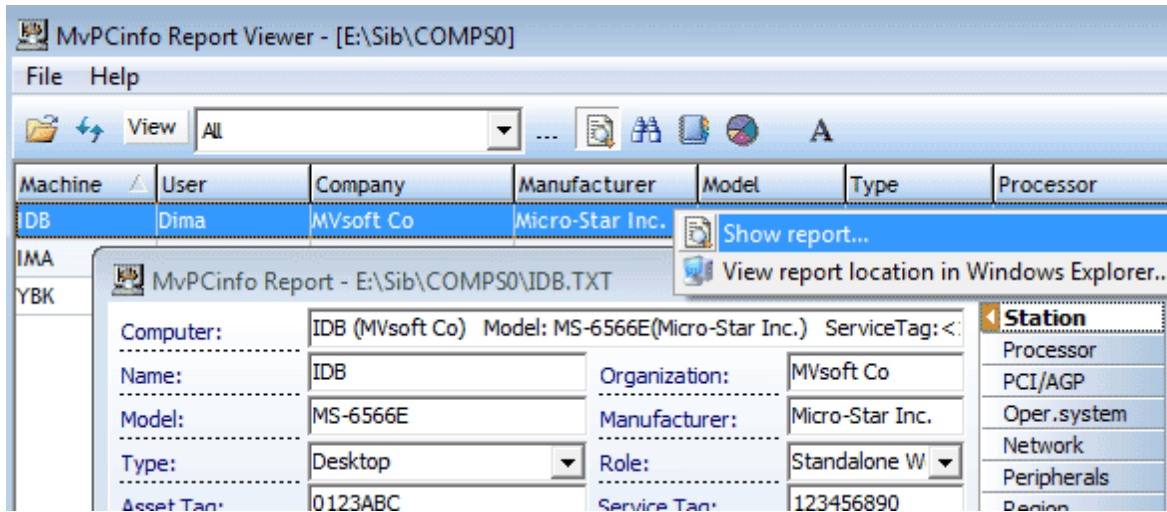


In the dialog appeared check desired subfolders, then click **Save** button, specify the **View** name and finally press **OK** button. Now **MvPCview** will display machines from selected folders only.

**Important!** **Find computer**, **Component Explorer** and **Statistics** features work for current **View** only...

## 2.4 View MvPCinfo report

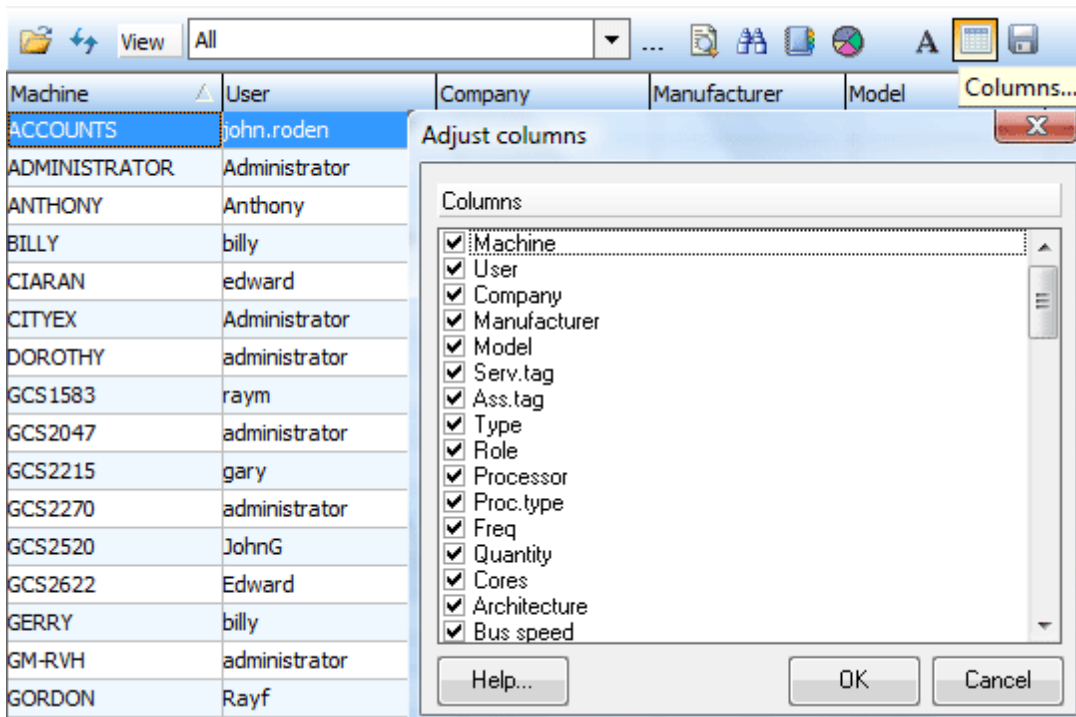
Main **MvPCview** window shows only general data about the machines. To see detailed information about any computer right-click mouse above its line and select **Show report...** item.



As result [MPCinfo Report](#) window will appear and you will see all the data collected from specified computer.

## 2.5 Adjust columns

Main form of [MPCview](#) contains a table that displays information about machines for current View. The content of this table can be changed by clicking [Main Menu -> Settings -> Columns...](#)

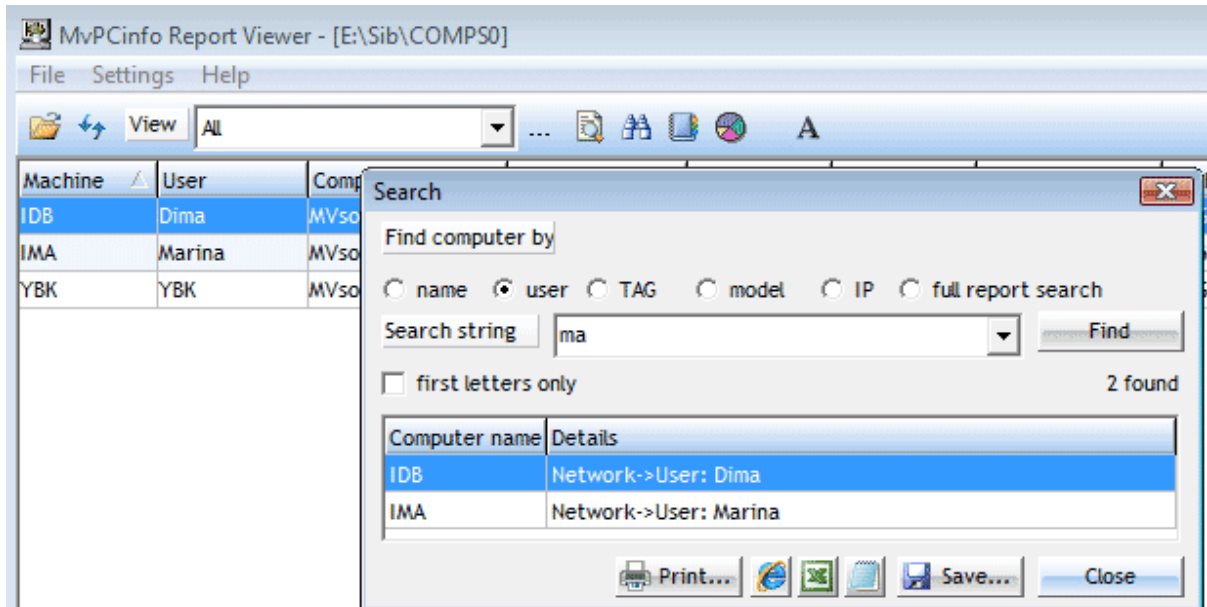


In the dialog appeared check up columns that you would like to see in the table.

## 2.6 Search of computer

MvPCview allows you to search the machine.

By clicking [Main Menu -> File -> Search...](#) the below Search dialog appears:



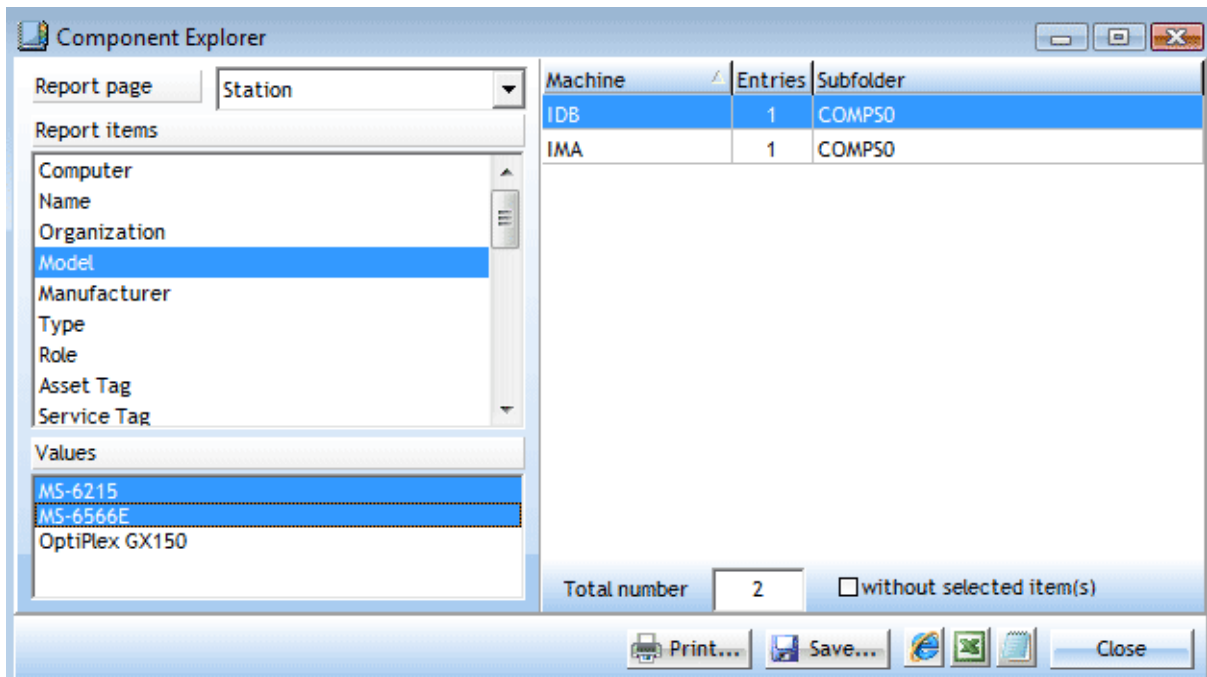
Please select [Name](#), [User](#), [TAG](#), [Model](#), [IP](#) or [Full report](#) search item; specify [Search string](#) and press [Find](#) button. MvPCview will start searching and results will appear in the table.

Results can be Printed, Saved as HTM, CSV, TXT files or sent directly to default Internet browser, MS Excel or default Text editor.

## 2.7 Component Explorer

Component Explorer allows you to select a component and find out where and how many times it is installed.

To start Component Explorer please click [Main Menu -> File -> Component Explorer...](#)



Please select [Report page](#), desired [Report item](#) and one or a few [values](#) - table on right will show you the list of machines where these items are found.

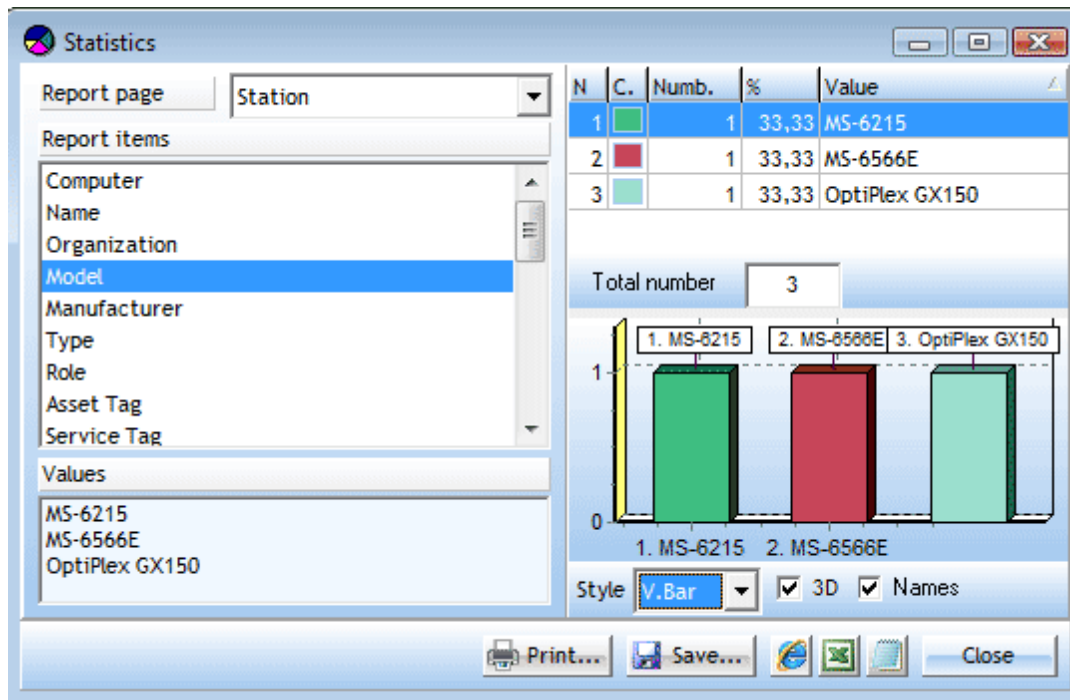
If you would like to get the list of machines where specified items are not installed - please check [without selected items](#) check box.

Results can be Printed, Saved as HTM, CSV, TXT files or sent directly to default Internet browser, MS Excel or default Text editor.

## 2.8 Statistics Chart

Statistics chart allows you to get graphic representation of components usage.

To view Statistics chart please click [Main Menu](#) -> [File](#) -> [Statistics...](#)



Please select [Report page](#) and desired [Report item](#) - table on right and the chart under it will display statistics on the item values appearance.

If you would like to combine two or a few result lines into one or correct line text - please select desired lines and right-click mouse above them and choose required command:

N	C.	Numb.	%	Value
1	■	31	25,61	??
2	■	1	0,82	ADVENT
3	■	1	0,82	Advent 2ndDiff
4	■	4	3,30	American Megatren
5	■	4	3,30	AWARD
6	■	1	0,82	AWARD XXX

Context menu options: Combine lines, Rename line... F2

Statistic results can be Printed, Saved as HTM, CSV, TXT files or sent directly to default Internet browser, MS Excel or default Text editor.

### 3 Licenses and prices

We offer following types of licenses for [MPCview](#) product:

**Personal (Ref.#300173838)** The Personal License allows you to use the Software for the sole purposes. You may install a copy of the Software on a computer and freely move the Software from one computer to another, provided that you are the only individual using the Software and only one copy of it runs at any moment.  
Cost: 75 EUR / 99 USD (Order link)



[Site \(Ref.#300584908\)](#) The Site License allows you to use the Software concurrently on ONE location of a company. You are allowed you to make copies of the Software for distribution within the location.  
Cost: 185 EUR / 225 USD (Order link)

[Support](#): 2-year free update

You can find the latest information concerning licenses and prices at <http://www.mvpcinfo.com/PCview/licenses.htm>

## 4 How to buy MvPCview

If you would like to purchase a license for MPCview, please start purchase procedure at <http://www.shareit.com/product.html?cart=1&productid=300173838&cookies=1&showcart=1>

During ordering process you will be able to choose appropriate payment method (Credit Card, Check, Wire transfer, Purchase order and so on).

You can get actual information concerning licenses and prices at <http://www.mvpcinfo.com/PCview/licenses.htm>

If you have ordered [MPCview](#) and would like to review your order information, or if you have questions about ordering, payment, or shipping procedures, please go visit the Customer Care Center.

## 5 Update policy

Our company provides [MPCview](#) customers with [2-year free update](#). We deliver updates ourselves by sending update materials directly to email address placed in order. Usually it occurs during a month after the new versions publishing.

If you want to get your free update faster - please send your email request to [support@mvpcinfo.com](mailto:support@mvpcinfo.com).

**Unsuccessful** update delivery happens if:

- your e-mail address was changed: please don't forget to inform us ([support@mvpcinfo.com](mailto:support@mvpcinfo.com)) of your email address changing;
- your local mail server firewall blocks, damages or kills the mails with EXE files enclosed: contact please your network administrator to allow email receiving with MPCview word in Subject OR provide us with an additional email address (such as [@yahoo.com](mailto:@yahoo.com), [@gmail.com](mailto:@gmail.com) or others) so we may perform a simultaneous delivery to each address you supply to us. This is likely to overcome delivery difficulties encountered at some addresses.

## 6 Evaluation and full versions differences

The limitations of [MPCview](#)'s evaluation version are as follows:

- saved and printed reports are truncated;
- evaluation period is 30 days after a first run.

---

# Index

## - C -

Change the View 4  
Component Explorer 6

## - E -

Evaluation and full versions differences 9

## - H -

How to order 9

## - I -

Installation 3

## - L -

Licenses and prices 8

## - M -

MvPCinfoMainIndex 3

## - S -

Search of Computer 6  
Specifying Root folder 3  
Statistics Chart 7

## - U -

Update policy 9

## - V -

View MvPCinfo report 4